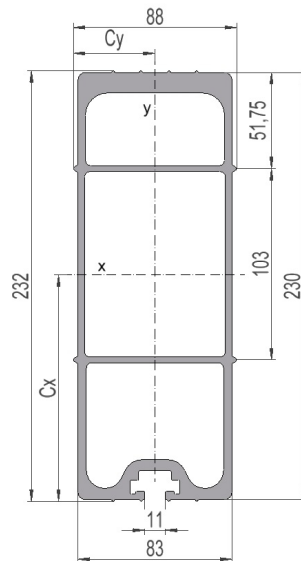


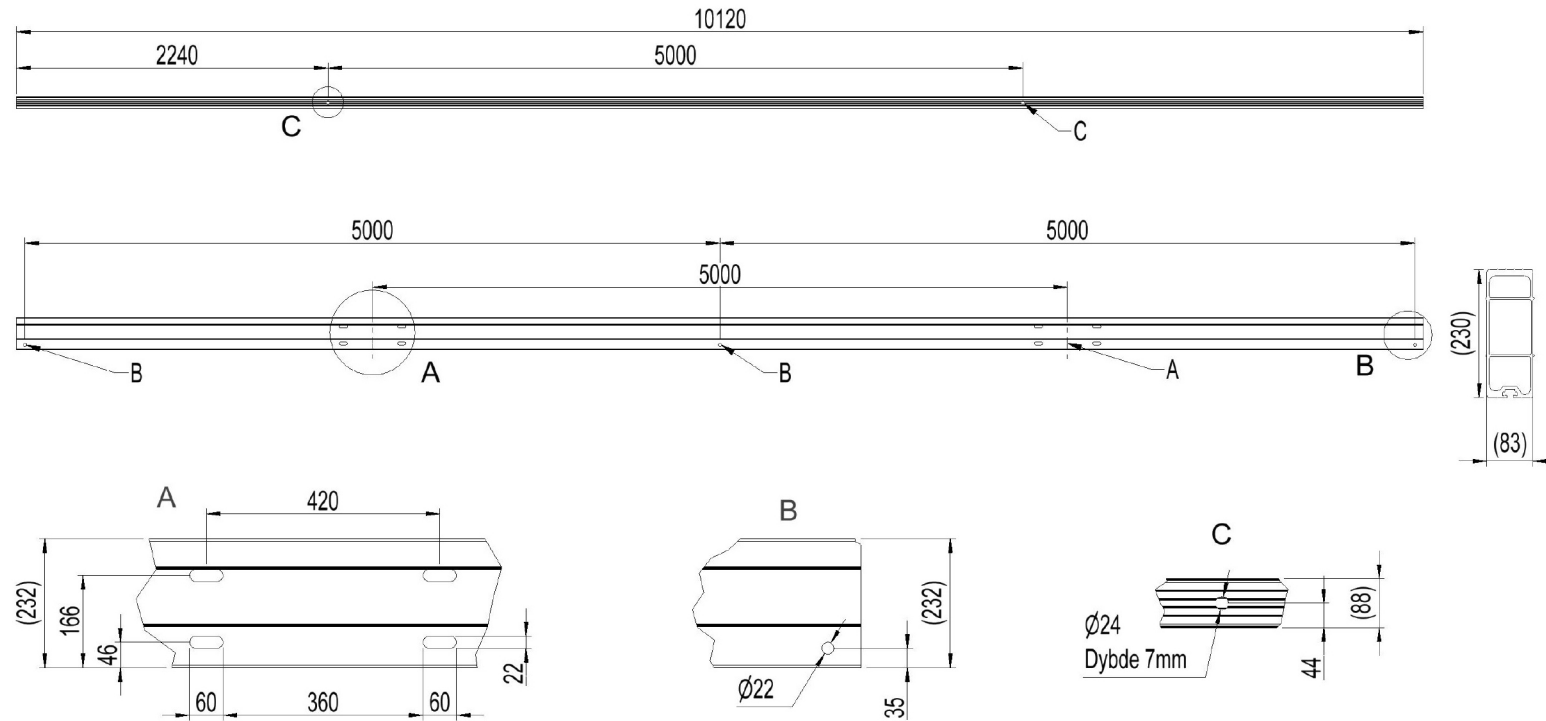
2836430 - Load-bearing crossbar T5050D-42-6S

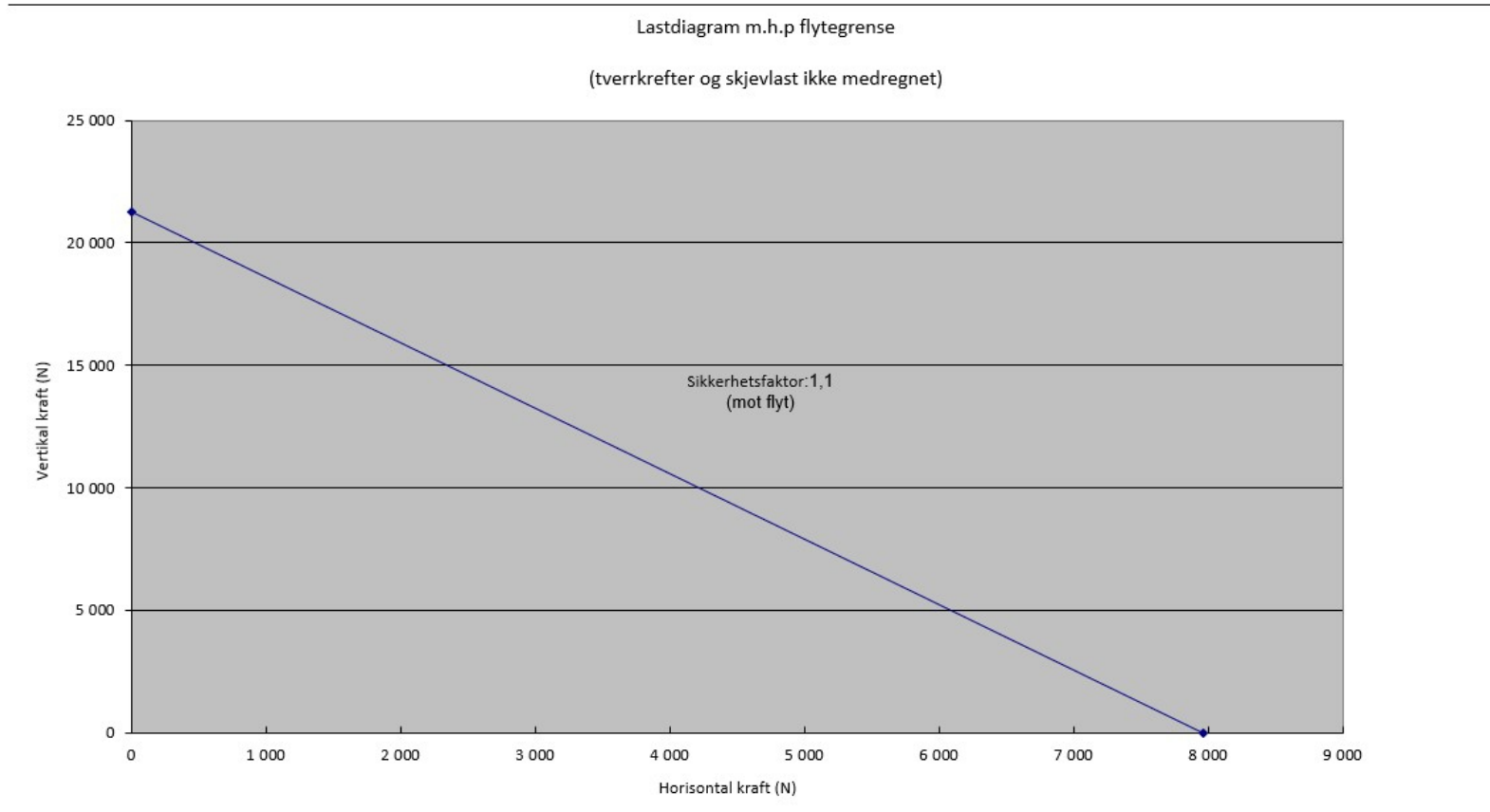
| | |
|----------------|-------------------------|
| Cross arm type | H/A-pole |
| Pole distance | 5m |
| Phase distance | 5m |
| Pole fastening | 420mm-double pole clamp |

Crossbar profile P6 (standing)

| | |
|--|---|
| Weight: (kg/m) | 10.52 |
| Cross section: (mm ²) | 3897 |
| Material: | Extruded aluminum, brown anodized |
| Alloy: | AlMgSi 6082-T6 |
| Moment of resistance: (mm ³) | W _x = 233 884 W _y = 87 555 |
| Area moment of inertia: (mm ⁴) | I _x = 28 325 925 I _y = 3 852 424 |
| Center distance for I _x : (mm) | C _x = 121,11 |
| Center distance for I _y : (mm) | C _y = 44,00 |
| Minimum yield strength 0,2: (N/mm ²) | 250 |
| Minimum breaking load: (N/mm ²) | 290 |







Total bøyning travers i forhold til last

