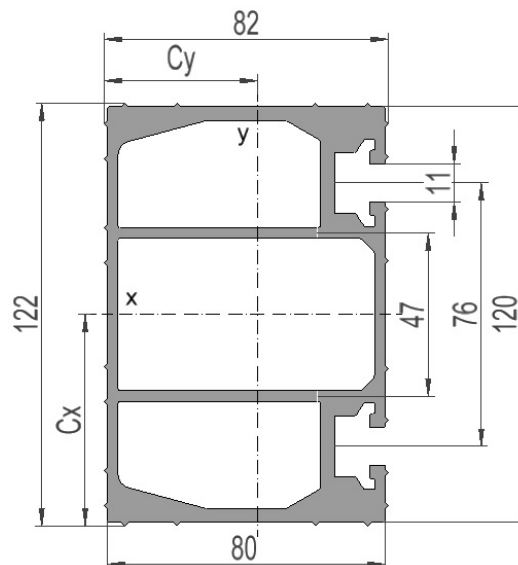


2836435 - Load-bearing crossbar T2206-2PF

| | |
|----------------|------------------------------|
| Cross arm type | H/A-pole |
| Pole distance | 2,2m |
| Phase distance | 0,6m |
| Pole fastening | Bolt, 280mm-single poleclamp |

Crossbar profile P2 (standing)

| | |
|--|--|
| Weight: (kg/m) | 6.707 |
| Cross section: (mm ²) | 2484 |
| Material: | Extruded aluminum, brown anodized |
| Alloy: | AlMgSi 6082-T6 |
| Moment of resistance: (mm ³) | W _x = 77 773 W _y = 46 031 |
| Area moment of inertia: (mm ⁴) | I _x = 4 744 150 I _y = 2 038 074 |
| Center distance for I _x : (mm) | C _x = 61,00 |
| Center distance for I _y : (mm) | C _y = 44,28 |
| Minimum yield strength 0,2: (N/mm ²) | 250 |
| Minimum breaking load: (N/mm ²) | 290 |



DATASHEET

2836435 - T2206-2PF

