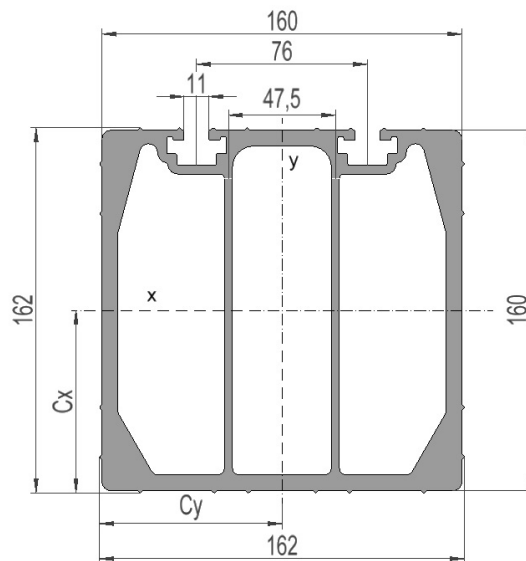


## 2836458 - Anch. crossbar T3AOE-5050D-50-8S

Cross arm type	Triple pole
Pole distance	5m
Phase distance	5m
Pole fastening	500mm-double pole clamp

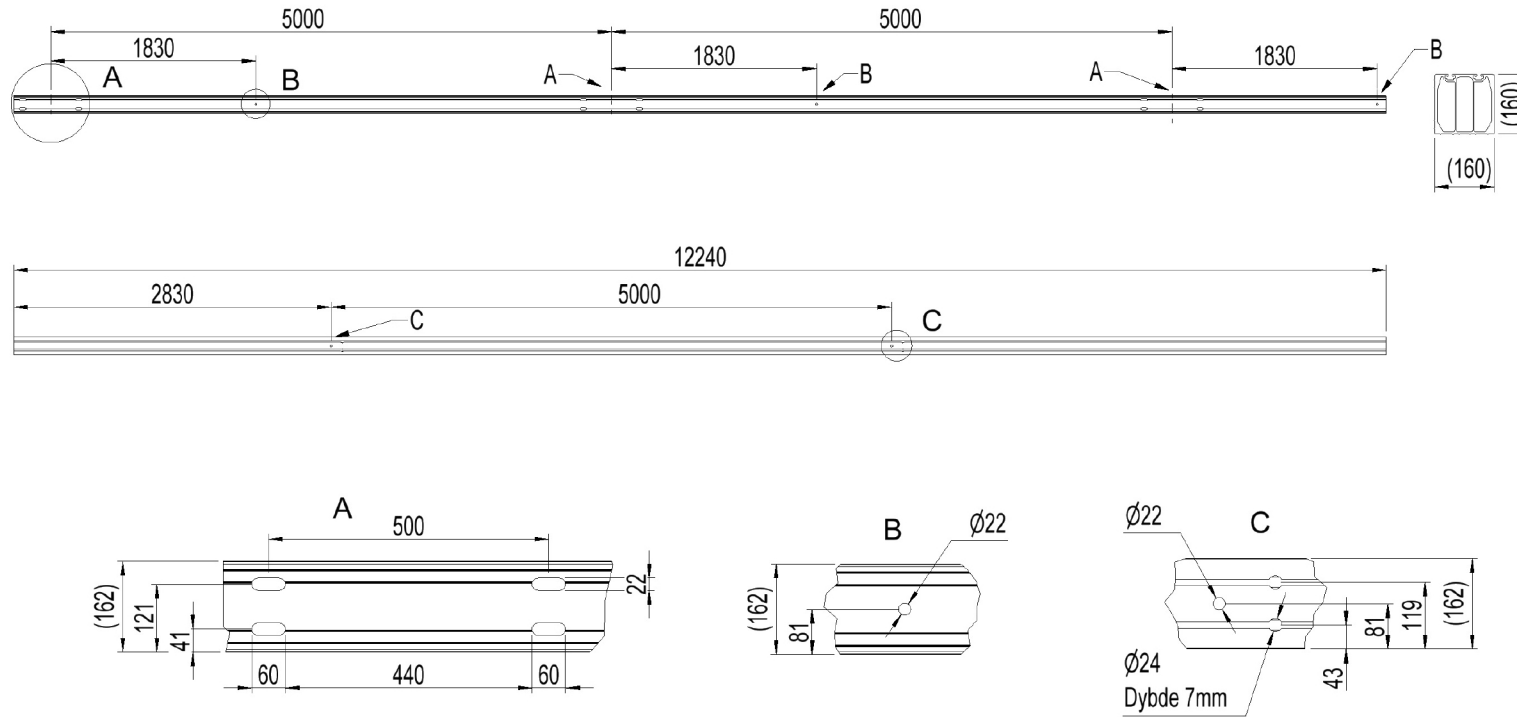
### Crossbar profile P8 (laying)

Weight: (kg/m)	16.982
Cross section: (mm <sup>2</sup> )	6290
Material:	Extruded aluminum, brown anodized
Alloy:	AlMgSi 6082-T6
Moment of resistance: (mm <sup>3</sup> )	W <sub>x</sub> = 272 777 W <sub>y</sub> = 265 967
Area moment of inertia: (mm <sup>4</sup> )	I <sub>x</sub> = 22 101 736 I <sub>y</sub> = 21 543 364
Center distance for I <sub>x</sub> : (mm)	C <sub>x</sub> = 81,03
Center distance for I <sub>y</sub> : (mm)	C <sub>y</sub> = 81,00
Minimum yield strength 0,2: (N/mm <sup>2</sup> )	250
Minimum breaking load: (N/mm <sup>2</sup> )	290



# DATASHEET

2836458 - T3AOE-5050D-50-8S



Sales and development, Trondheim

[www.el-tjeneste.no](http://www.el-tjeneste.no)

Østre Rosten 84G

7075 Tiller

Phone: 976 74 000

Email: [info@el-tjeneste.no](mailto:info@el-tjeneste.no)

Factory and warehouse, Steinkjer

Jæktsmedgata 4

7725 Steinkjer

Phone: 976 74 000

Email: [info@el-tjeneste.no](mailto:info@el-tjeneste.no)