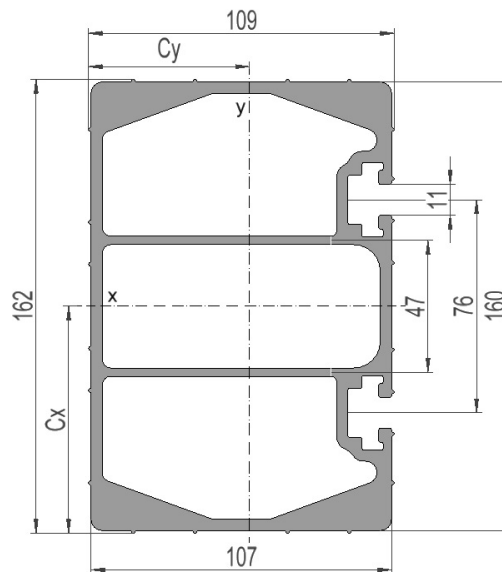


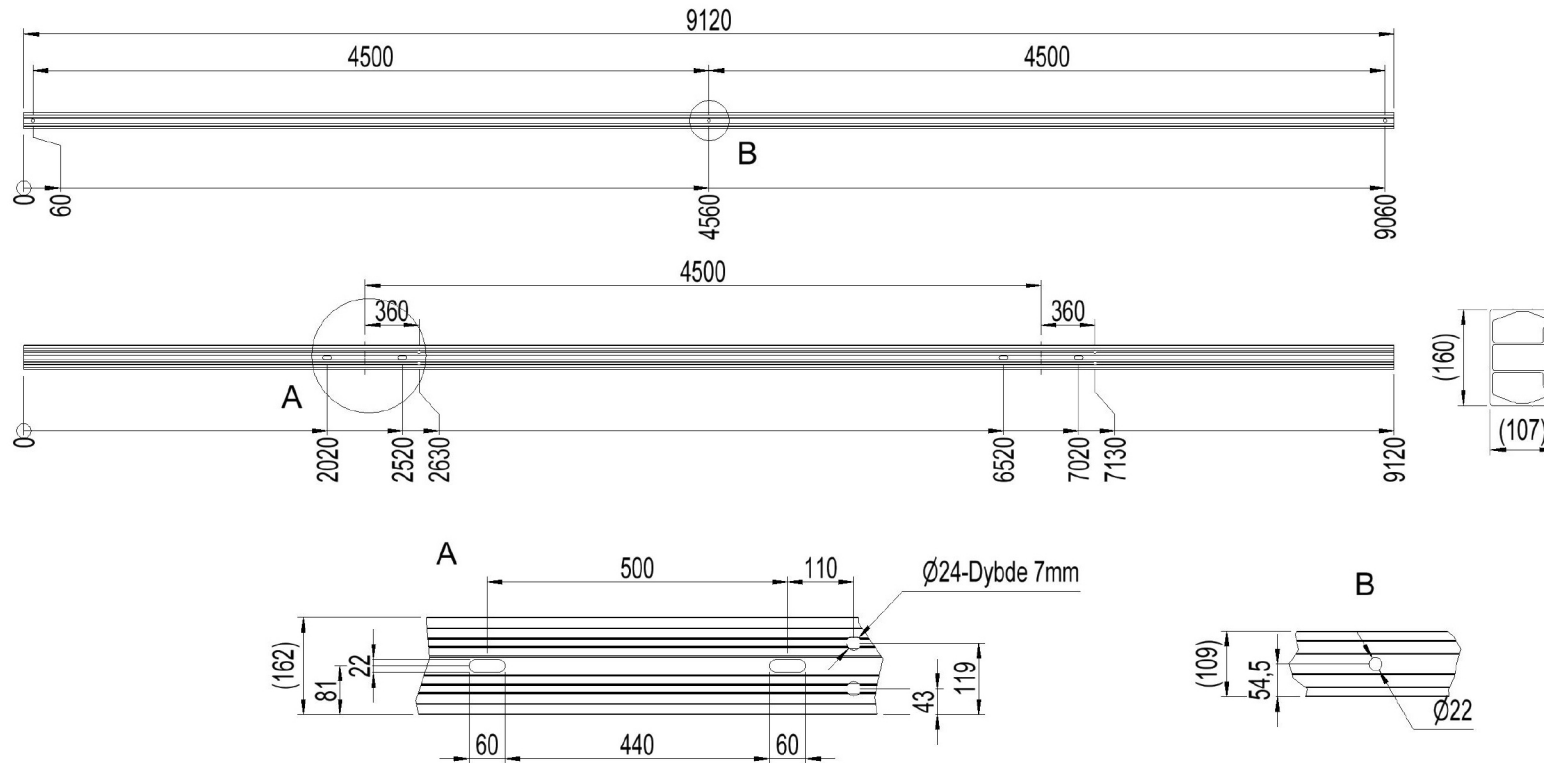
## 2836489 - Anch. crossbar TA4545-50-3S

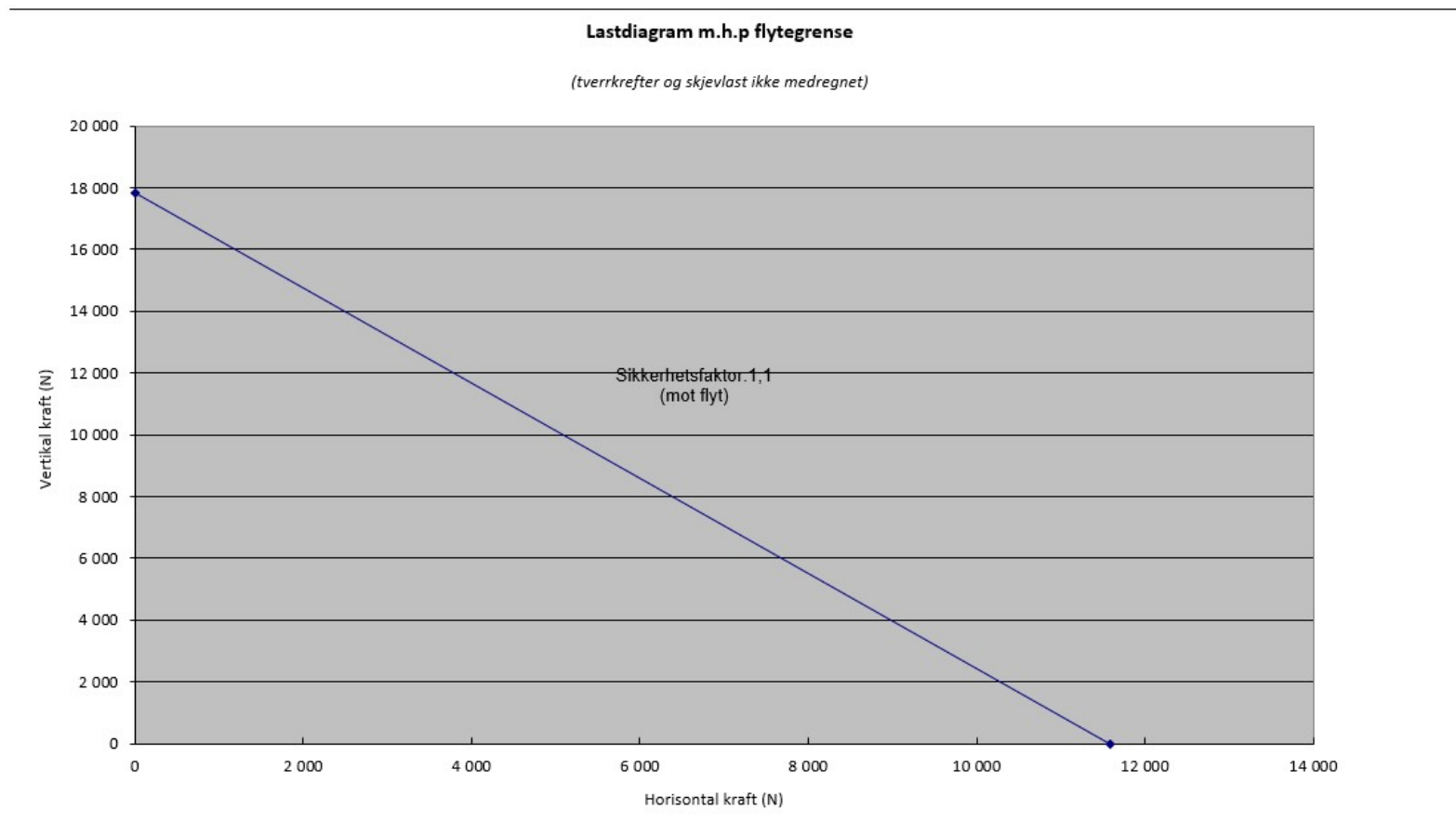
Cross arm type	H/A-pole
Pole distance	4,5m
Phase distance	4,5m
Pole fastening	500mm-single pole clamp

### Crossbar profile P3 (standing)

Weight: (kg/m)	11.238
Cross section: (mm <sup>2</sup> )	4162
Material:	Extruded aluminum, brown anodized
Alloy:	AlMgSi 6082-T6
Moment of resistance: (mm <sup>3</sup> )	W <sub>x</sub> = 176 412 W <sub>y</sub> = 114 771
Area moment of inertia: (mm <sup>4</sup> )	I <sub>x</sub> = 14 286 921 I <sub>y</sub> = 6 593 950
Center distance for I <sub>x</sub> : (mm)	C <sub>x</sub> = 80,99
Center distance for I <sub>y</sub> : (mm)	C <sub>y</sub> = 57,45
Minimum yield strength 0,2: (N/mm <sup>2</sup> )	250
Minimum breaking load: (N/mm <sup>2</sup> )	290







Total bøyning travers i forhold til last

