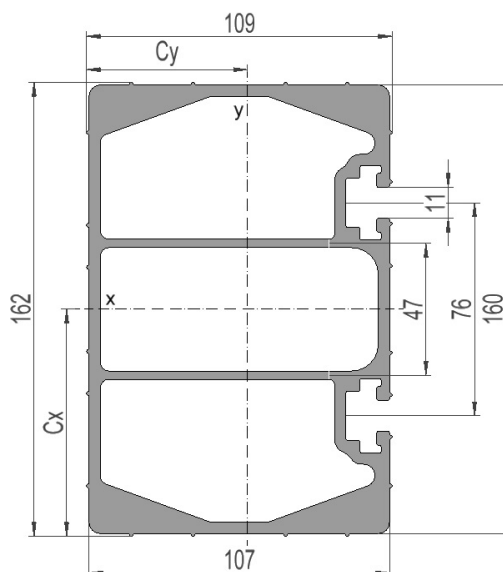


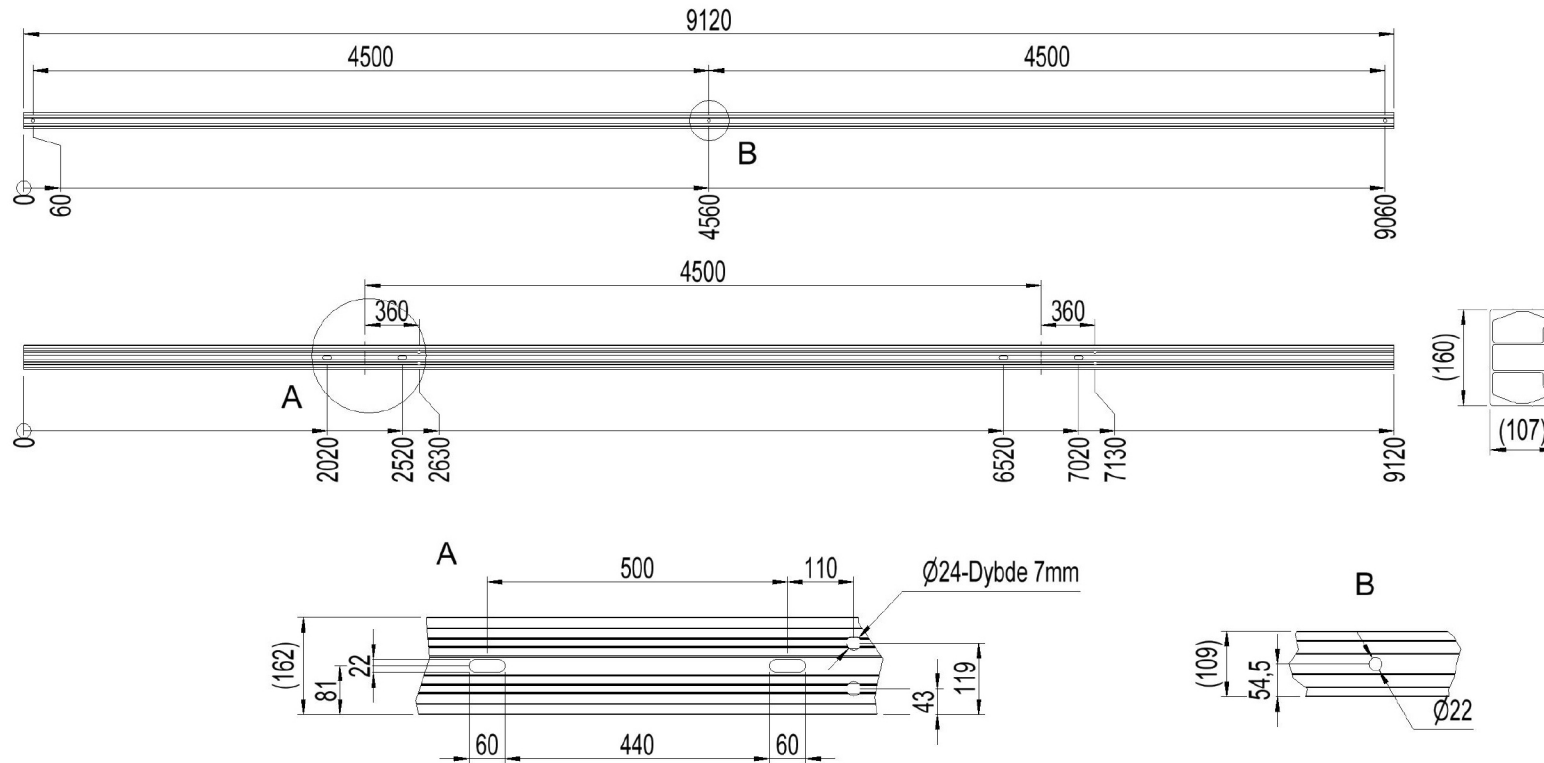
**2836489 - Avsp.trav TA4545-50-3S**

|                  |                        |
|------------------|------------------------|
| Mastetype        | H/A-mast               |
| Masteavstand     | 4,5m                   |
| Faseavstand      | 4,5m                   |
| Stolpeinnfesting | 500mm-enkel masteklave |

**Traversprofil P3 (stående)**

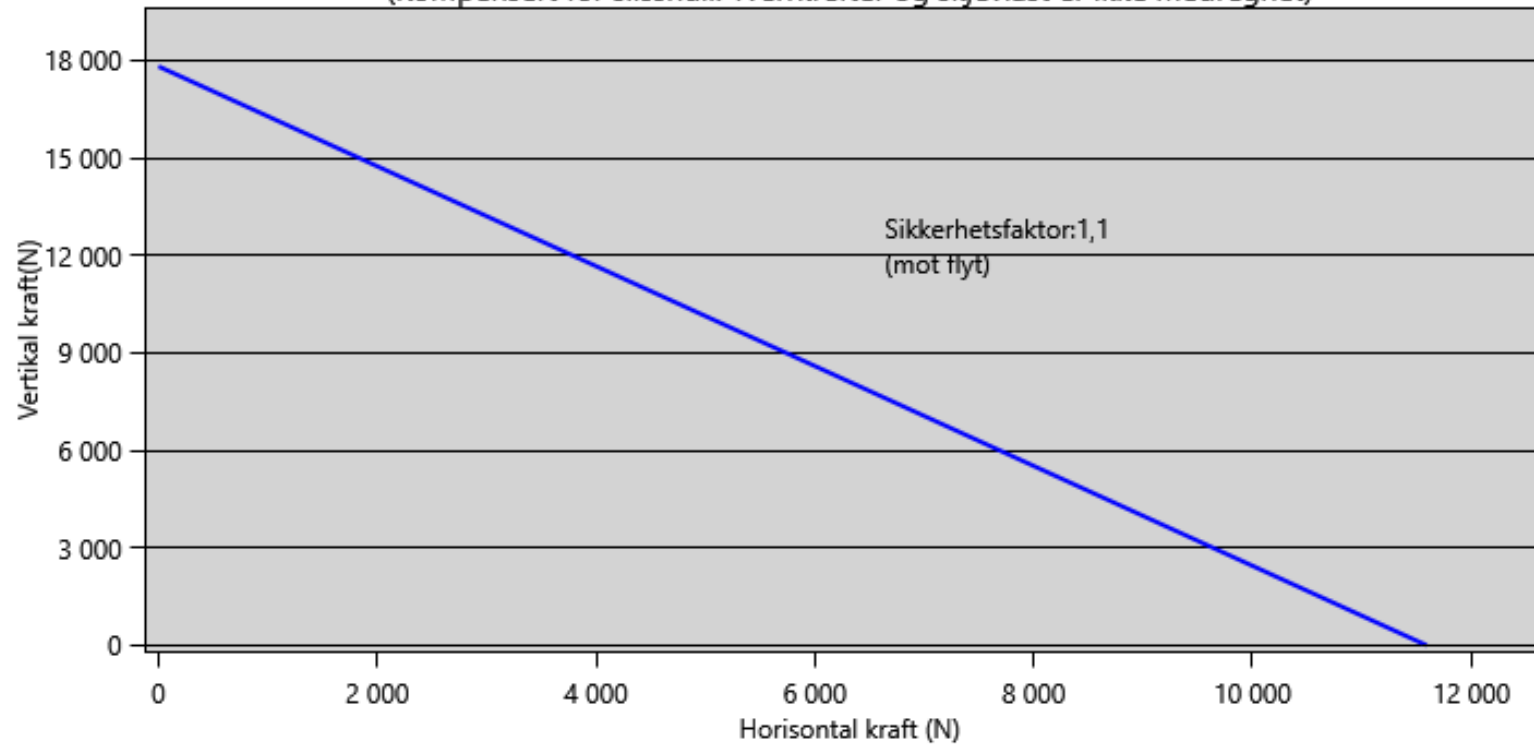
|   |   |
|---|---|
| Vekt: (kg/m)                                  | 11.238  |
| Areal: (mm <sup>2</sup> )                     | 4162  |
| Materiale:                                    | Aluminiumsprofil, bruneloksert                            |
| Legering:                                     | AlMgSi 6082-T6  |
| Motstandsmoment: (mm <sup>3</sup> )           | W <sub>x</sub> = 176 412<br>W <sub>y</sub> = 114 771      |
| Annet arealmoment: (mm <sup>4</sup> )         | I <sub>x</sub> = 14 286 921<br>I <sub>y</sub> = 6 593 950 |
| Senteravstand for I <sub>x</sub> : (mm)       | C <sub>x</sub> = 80,99                                    |
| Senteravstand for I <sub>y</sub> : (mm)       | C <sub>y</sub> = 57,45                                    |
| Minimum flytegrense 0,2: (N/mm <sup>2</sup> ) | 250   |
| Minimum bruddgrense: (N/mm <sup>2</sup> )     | 290   |





### Lastdiagram m.h.p flytegrense

(Kompensert for slisshull. Tverrkrefter og skjevlast er ikke medregnet)



## Total nedbøyning travers i forhold til last

