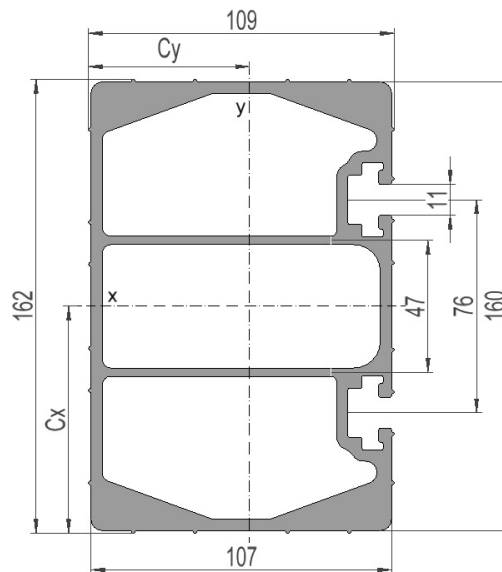


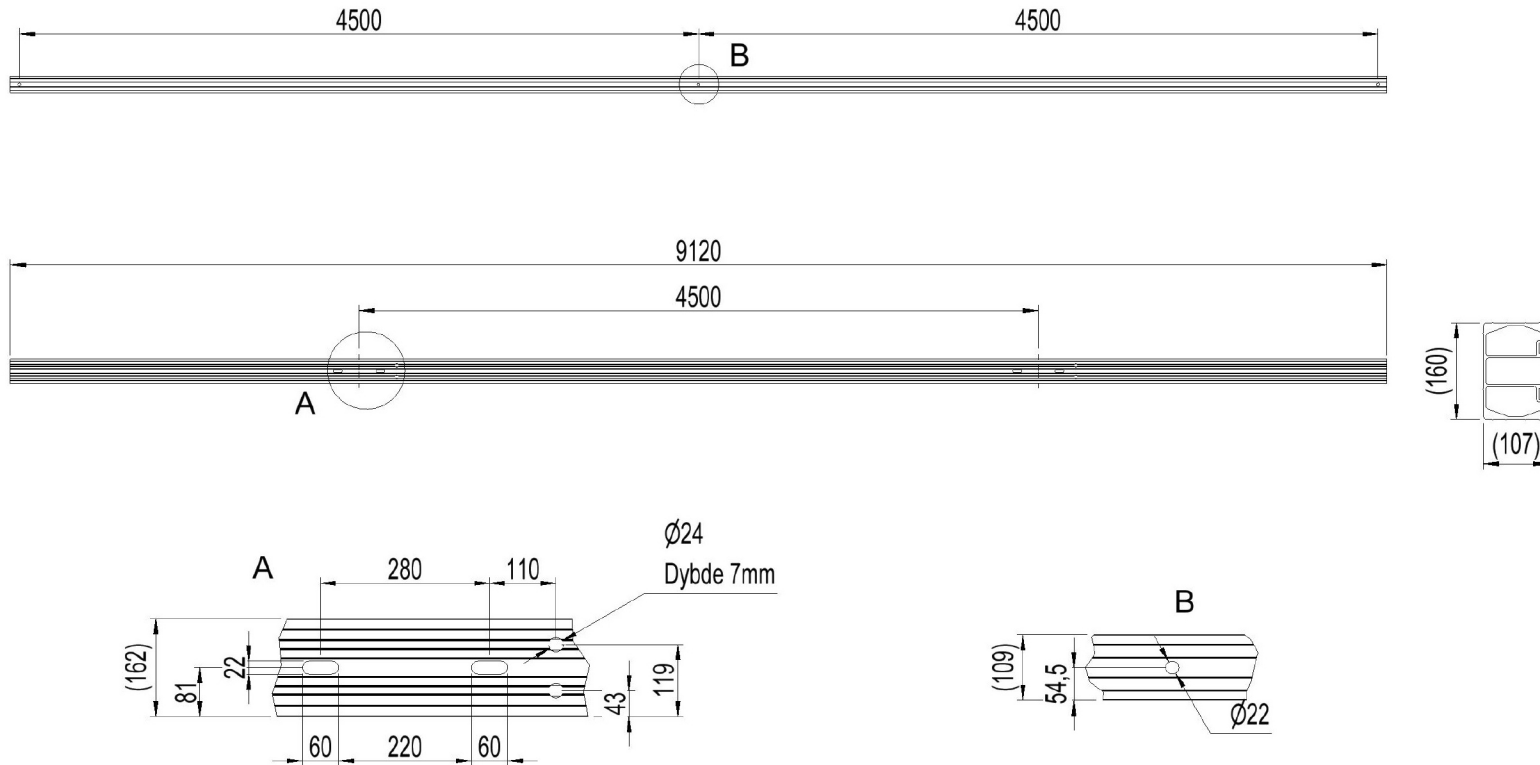
2836717 - Anch. crossbar TA4545-3S

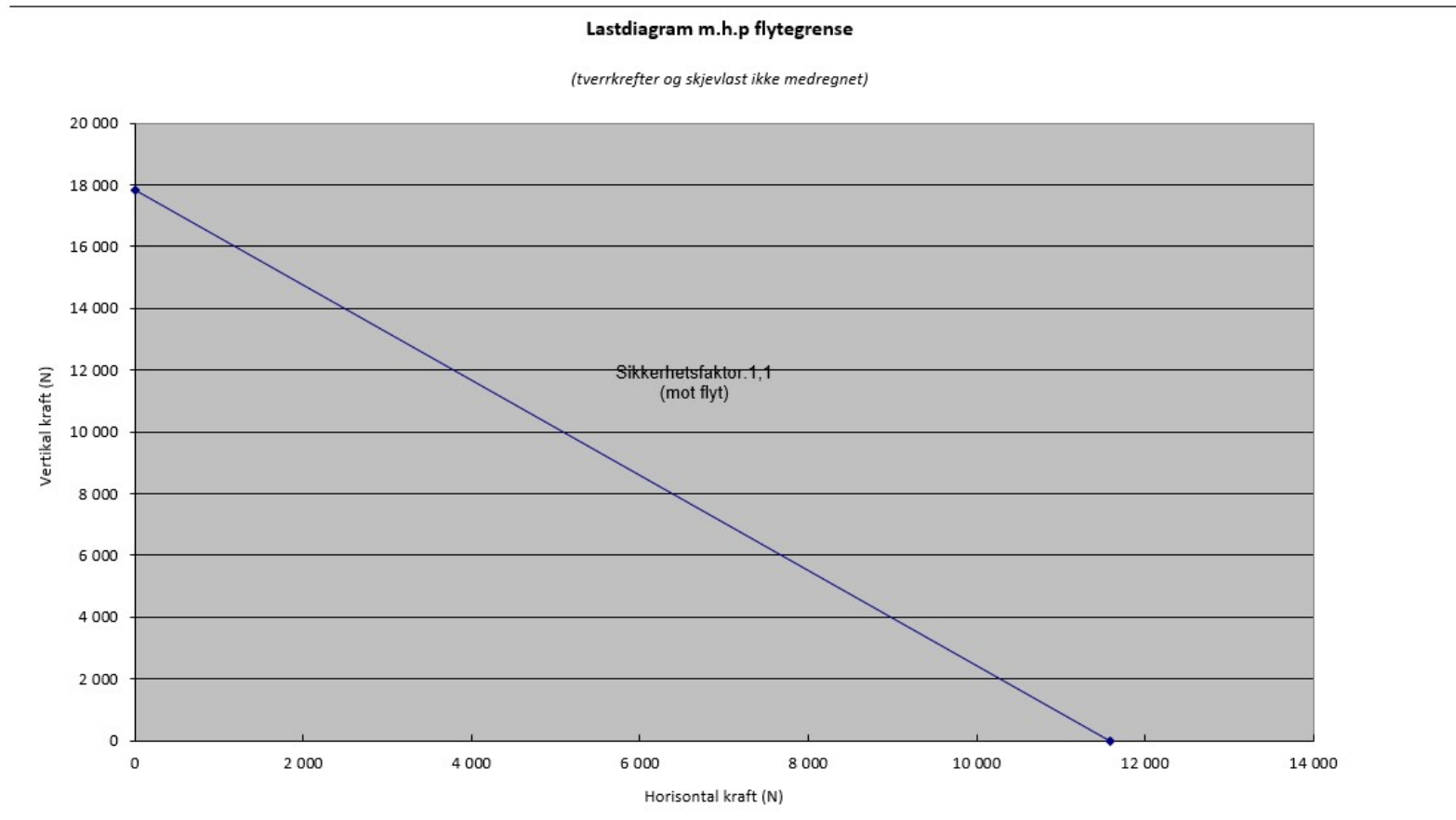
| | |
|----------------|------------------------|
| Cross arm type | H/A-pole |
| Pole distance | 4,5m |
| Phase distance | 4,5m |
| Pole fastening | 280mm-single poleclamp |

Crossbar profile P3 (standing)

| | |
|--|---|
| Weight: (kg/m) | 11.238 |
| Cross section: (mm ²) | 4162 |
| Material: | Extruded aluminum, brown anodized |
| Alloy: | AlMgSi 6082-T6 |
| Moment of resistance: (mm ³) | W _x = 176 412 W _y = 114 771 |
| Area moment of inertia: (mm ⁴) | I _x = 14 286 921 I _y = 6 593 950 |
| Center distance for I _x : (mm) | C _x = 80,99 |
| Center distance for I _y : (mm) | C _y = 57,45 |
| Minimum yield strength 0,2: (N/mm ²) | 250 |
| Minimum breaking load: (N/mm ²) | 290 |







Total bøyning travers i forhold til last

