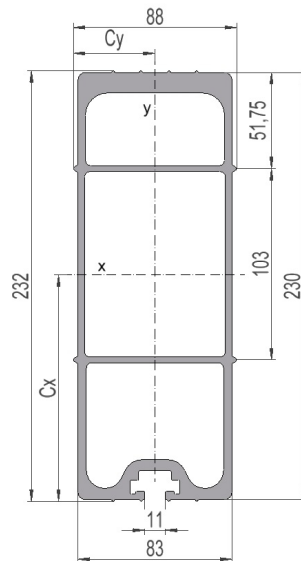


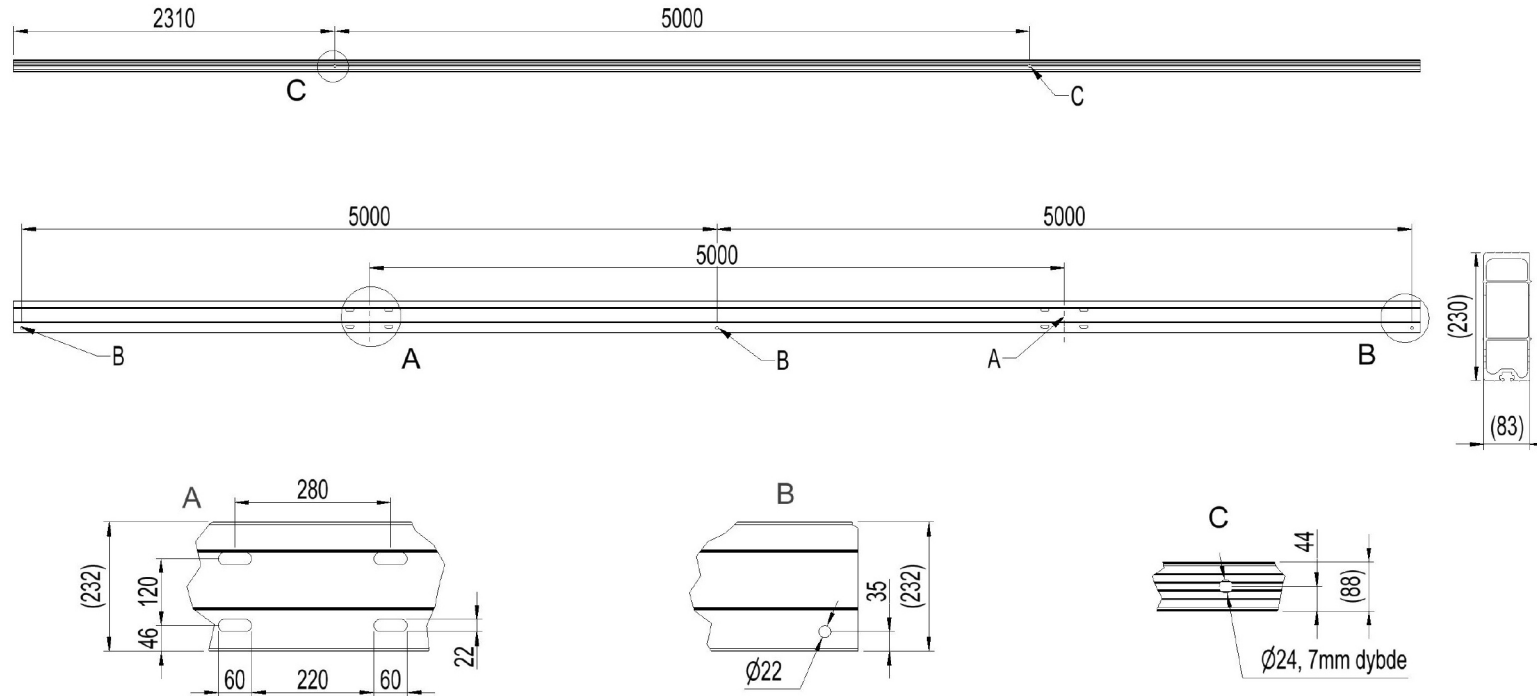
## 2836770 - Load-bearing crossbar T5050D-6S

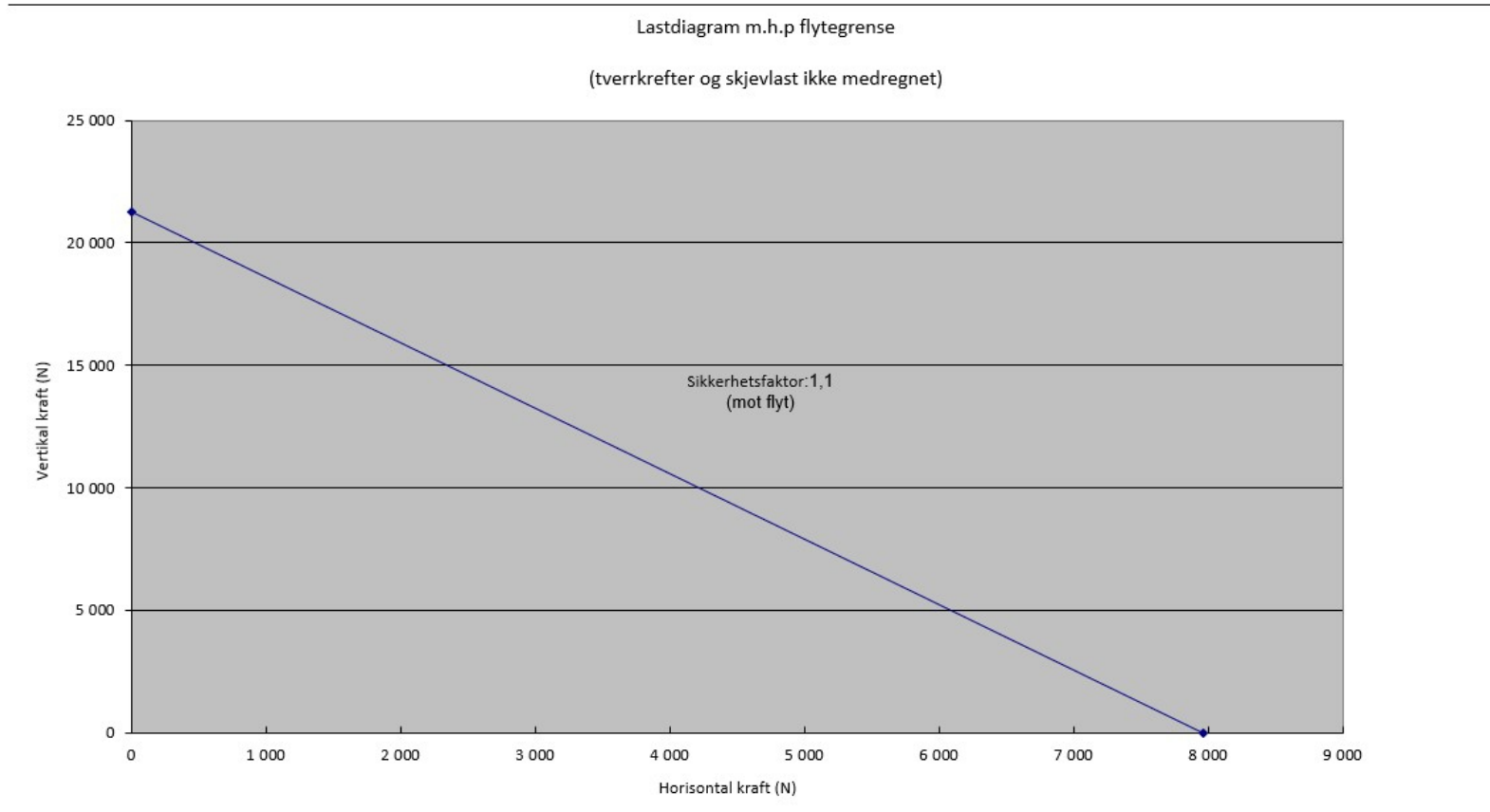
|                |                         |
|----------------|-------------------------|
| Cross arm type | H/A-pole                |
| Pole distance  | 5m                      |
| Phase distance | 5m                      |
| Pole fastening | 280mm-double pole clamp |

### Crossbar profile P6 (standing)

|  |   |
|--|---|
| Weight: (kg/m)                                   | 10.52   |
| Cross section: (mm <sup>2</sup> )                | 3897  |
| Material:  | Extruded aluminum, brown anodized                         |
| Alloy:   | AlMgSi 6082-T6  |
| Moment of resistance: (mm <sup>3</sup> )         | W <sub>x</sub> = 233 884<br>W <sub>y</sub> = 87 555       |
| Area moment of inertia: (mm <sup>4</sup> )       | I <sub>x</sub> = 28 325 925<br>I <sub>y</sub> = 3 852 424 |
| Center distance for I <sub>x</sub> : (mm)        | C <sub>x</sub> = 121,11                                   |
| Center distance for I <sub>y</sub> : (mm)        | C <sub>y</sub> = 44,00                                    |
| Minimum yield strength 0,2: (N/mm <sup>2</sup> ) | 250   |
| Minimum breaking load: (N/mm <sup>2</sup> )      | 290   |







Total bøyning travers i forhold til last

